

OKLAHOMA DEPARTMENT OF TRANSPORTATION					
FED. ROAD DIST. NO.	STATE	PROJ. NO.	FISCAL YEAR	SHEET NO.	TOTAL SHEETS
	OKLA.				
DESCRIPTION			REVISIONS	DATE	

SE/4 SECTION 4,
T-25-N, R-17-E

SE/4, NE/4 SECTION 4,
T-25-N, R-17-E

285+00

290+00

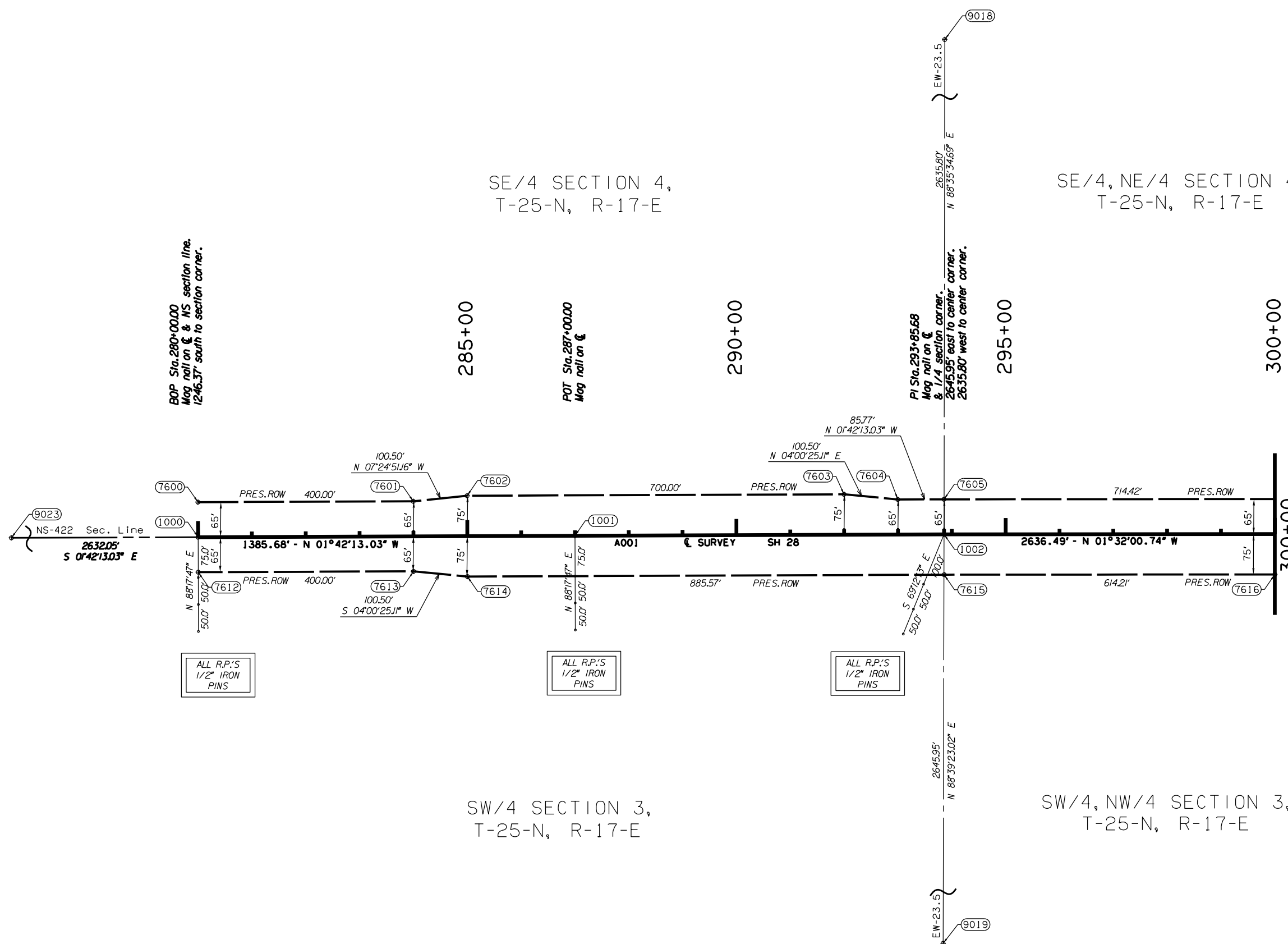
295+00

300+00

BOP Sta. 280+00.00
Mag nail on \odot & NS section line.
1246.37' south to section corner.

POT Sta. 287+00.00
Mag nail on \odot

PI Sta. 293+85.68
Mag nail on \odot
& 1/4 section corner.
2645.95' east to center corner.
2635.80' west to center corner.



ALL R.P.'S
1/2" IRON
PINS

ALL R.P.'S
1/2" IRON
PINS

ALL R.P.'S
1/2" IRON
PINS

SW/4 SECTION 3,
T-25-N, R-17-E

SW/4, NW/4 SECTION 3,
T-25-N, R-17-E



Scale:
1" = 100'

OKLAHOMA DEPARTMENT OF TRANSPORTATION SURVEY DIVISION					
SURVEY DATA SHEET					
PLS	DMM				
DRAWN	VKM				
CHECKED	CAC				
APPROVED	DMM				
CREW	GES, INC.	SWO 4851(1)	PROJECT NO. 28857(04)	SHEET NO. S007	